

vivo

## Laboratory Equipment for Routine Applications

✓ Easy to use

✓ Reliable

✓ Cost effective



vivo - less is more

The new vivo heating and refrigerated/heating circulators combine unique performance features, reliable quality, and easy operation with extremely competitive pricing – made in Germany, which is unmatched in this segment.

vivo products are the ideal cost effective solution for routine heating and cooling tasks in laboratories.

All vivo temperature control instruments are engineered and manufactured according to German DIN standards and therefore comply with European CE requirements.

vivo is your perfect choice for heating and cooling tasks such as:

- + Temperature control of samples inside a circulating bath
- + Cooling of condensers
- + Material testing
- + Sample preparation for serology

vivo – quality made affordable!



## Circulator itherm

		itherm
Description		Circulator
Order No.		9V T1 000
Working temp. range	°C	+20 ... + 85 <sup>1)</sup>
Temperature stability	°C	± 0.05
Heating capacity	W	1500
Pump capacity Flow rate / pressure	Lpm/ mbar	10 230
Immersion depth	cm	16.5
Weight	kg	3.5
Dimensions W x L / H	cm	18 x 15 / 32
Voltage	V/Hz	230 / 50 or 230 / 60

### Info

- + Choose from a wide selection of accessories (page 4-5), and easily create your own Immersion -, or Bath Circulator with useful accessories such as covers, racks for test tubes etc.
- + To mount the itherm to virtually any bath tank, please select the bath clamp as accessory. If one of the bath tanks is used, we recommend to select the mounting bridge as first choice - alternatively the bath clamp can be used.

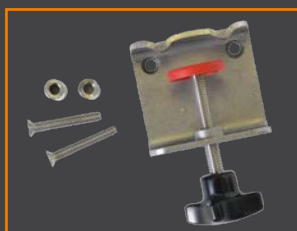
<sup>1)</sup> Use a cooling coil for working temperatures near or below room temperature.

- + Very easy to use. Set and go.
- + Temperature range up to +85 °C
- + PID temperature control
- + Strong 1.5 kW heater for fast heat-up
- + Circulate internally with the integrated pump, or use the optional pump set for external circulation
- + Over temperature cut-off, adjustable within working temperature range
- + Float switch with cut-off feature for low liquid level protection
- + For use with water, conform to classification I, DIN 12876-1
- + Stand-by and self-start function to choose instrument mode after power outage



## Accessories for iterm

1



Bath clamp

2



Cooling coil

3



Pump set

4



Bridge

5



Bath tanks



	Description	Suitable for	Order No.
1	<b>Bath clamp</b>	iterm	9V X1 005
2	<b>Cooling coil</b>	iterm	9V X1 001
3	<b>Pump set</b> for external circulation	iterm	9V X1 002
4	Mounting <b>Bridge</b> for bath tank, stainless steel	iterm	9V X1 003
5	<b>B3 - Bath tank</b> stainless steel Filling volume: max. 12 L Dimensions (cm), W x L / H: 36 x 33 / 18.5 (outer)   32 x 29 / 15 (inner)	iterm	9V X0 B03
	<b>B5 - Bath tank</b> stainless steel Filling volume: max. 18 L Dimensions (cm), W x L / H: 53 x 33 / 18.5 (outer)   49 x 29 / 15 (inner)	iterm	9V X0 B05



Tubing



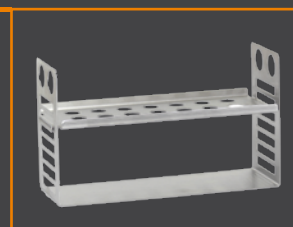
9

Bath covers



8

Platform



7

B3 / B5



Racks for

test tubes

6



6

**Test tube rack** for tubes 12/13 mm (insert capacity: B3 = 1 ; B5 = 2)

Bath tank B3 / B5

9V X1 030

**Test tube rack** for tubes 16/17 mm (insert capacity: B3 = 1 ; B5 = 2)

Bath tank B3 / B5

9V X1 031

7

**Platform**, height adjustable (insert capacity: B3 = 1 ; B5 = 2)

Bath tank B3 / B5

9V X1 040

8

**Bath cover**, flat

Bath tank B3

9V X1 020

**Bath cover**, flat

Bath tank B5

9V X1 021

9

**Tubing** for external circulation, 10 mm inner diameter, per meter, -20 ... +100 °C

Pump set

9V X1 050

**Insulation**, 10 mm inner diameter, per meter

Tubing

9V X1 052

**2 Tubing clamps**

Tubing 10 mm ID

9V X1 055

## Refrigerated & Heating Circulator RT2

- + Very easy to use. Set and go.
- + Cooling and heating
- + PID temperature control
- + Strong 1.5 kW heater for fast heat-up
- + 150 W of cooling power at +20 °C
- + External pump connections are standard
- + Over temperature cut-off, adjustable within working temperature range
- + Float switch with cut-off feature for low liquid level protection
- + Drain for easy emptying in the front
- + Small footprint
- + For use with water, water-glycol, conform to classification I, DIN 12876-1
- + Compressor based cooling in the entire working temperature range



		RT2
Description		Refrigerated & Heating Circulator
Order No.		9V T1 R02
Working temp. range	°C	-20 ... +85
Temperature stability	°C	± 0.05
Heating capacity	W	1500
Pump capacity	Lpm/	10
Flow rate / pressure	mbar	230
Cooling capacity	20 °C	150
	10 °C	140
	0 °C	110
	-10 °C	100
	-20 °C	50
Filling volume	l	4 - 6
Bath opening W x L	cm	12.5 x 11.5
Bath depth	cm	19
Weight	kg	24
Dimensions W x L / H	cm	22.5 x 42 / 62
Voltage	V/Hz	230 / 50 or 230 / 60
<b>Info</b> Instruments equipped with - pump and connections for external circulation (for 10 mm inner diameter tubing) - bath lid - CFC-free refrigerants (R134a)		

## Accessories for RT2 / RT4

Description
<b>Tubing</b> for external circulation, 10 mm inner diameter, per meter, -20 ... +100 °C
<b>Insulation</b> , 10 mm inner diameter, per meter
<b>2 Tubing clamps</b>
<b>Bath fluid</b> (10 L), -25 ... +80 °C

## Refrigerated & Heating Circulator RT4

		RT4
Description		Refrigerated & Heating Circulator
Order No.		9VT1 R04
Working temp. range	°C	-25 ... +85
Temperature stability	°C	± 0.05
Heating capacity	W	1500
Pump capacity	Lpm/	10
Flow rate / pressure	mbar	230
Cooling capacity	20 °C	300
	10 °C	280
	0 °C	220
	-10 °C	170
	-20 °C	70
Filling volume	l	4 - 6
Bath opening W x L	cm	12.5 x 11.5
Bath depth	cm	19
Weight	kg	24
Dimensions W x L / H	cm	22.5 x 42 / 62
Voltage	V/Hz	230 / 50 or 230 / 60
<b>Info</b> Instruments equipped with - pump and connections for external circulation (for 10 mm inner diameter tubing) - bath lid - CFC-free refrigerants (R134a)		

- + Very easy to use. Set and go.
- + Cooling and heating
- + PID temperature control
- + Strong 1.5 kW heater for fast heat-up
- + 300 W of cooling power at +20 °C
- + External pump connections are standard
- + Over temperature cut-off, adjustable within working temperature range
- + Float switch with cut-off feature for low liquid level protection
- + Drain for easy emptying in the front
- + Small footprint
- + For use with water, water-glycol, conform to classification I, DIN 12876-1
- + Compressor based cooling in the entire working temperature range



Suitable for	Order No.
RT2 / RT4	9V X1 050
Tubing	9V X1 052
Tubing 10 mm inner diameter	9V X1 055
RT2 / RT4	9V X1 070

## Contact

